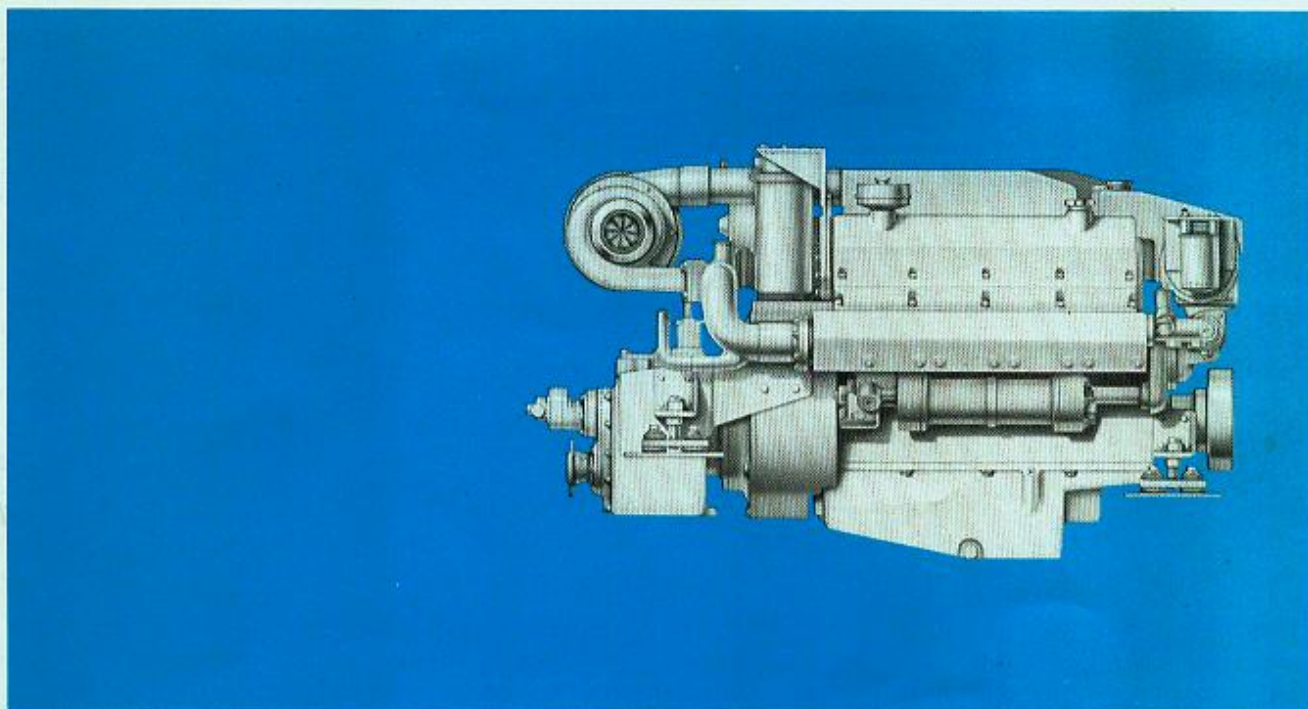


Cummins Marine Diesel

VT-903-M1



Specifications

Power Ratings

		<u>Metric</u>
Pleasure Boat	340 bhp	254 kW
Governed RPM	2800	2800
Light Duty Commercial	295 bhp	220 kW
Governed RPM	2600	2600
Continuous Duty	255 bhp	190 kW
Governed RPM	2300	2300
Number of Cylinders	8	8
Bore and Stroke	5½ x 4¾ in.	140 x 121 mm
Piston Displacement	903 cu. in.	14.8 l
Aspiration	Turbocharged	
Operating Cycles	4	4
Oil Pan Capacity	5 U.S. gals.	19 l
Coolant Capacity	12 U.S. gals.	45.4 l
Net Weight, Dry†	2950 lbs.	1340 kg

†With selected accessories and Capitol 4HE-10200 marine gear.

Design Features

Bearings: Replaceable, precision type, steel backed inserts. Five main bearings, 3.75 in. (95 mm) diameter. Connecting rod bearings 3.125 in. (79 mm) diameter.

Camshaft: Single camshaft precisely controls valve and injector timing. Lobes are induction hardened for long life. Five replaceable precision type bearings 2.5 in. (63 mm) diameter.

Camshaft Followers: Induction hardened, roller type for long cam and follower life.

Connecting Rods: Drop forged, I-beam section 8.2 in. (208 mm) center to center length. Rifle drilled for pressure lubrication of piston pin. Rod is tapered on piston pin end to reduce unit pressures.

Cooling System: Gear driven centrifugal jacket water pump. Large volume water passages provide even flow of coolant around cylinder liners, valves, and injectors. Modulating by-pass thermostat regulates coolant temperature. Spin-on corrosion resistor checks rust and corrosion, controls acidity and removes impurities.

Crankshaft: Fully counterweighted high tensile strength steel forging with induction hardened fillets and journals.

Cylinder Block: Alloy cast iron with removable wet liners. Cross bolt support to main bearing cap provides extra strength and stability.

Cylinder Heads: Alloy cast iron. Each head serves four cylinders. Drilled fuel supply and return lines. Valve seats are replaceable corrosion resistant inserts. Valve guides and cross head guides are replaceable inserts.

Cylinder Liners: Replaceable wet liners dissipate heat faster than dry liners and are easily replaced without re boring the block.

Design Features continued on back page

